

Sample Name: LOT#MD70685

```

=====
Acq. Instrument : Instrument 1                      Seq. Line : 2
Injection Date  : 17-Jul-18, 11:10:58             Location  : Vial 102
                                                    Inj      : 1
                                                    Inj Volume : 0.2 µl
Sequence File   : C:\Chem32\1\DATA\07172018\0712018 2018-07-17 10-40-05\0712018.S
Method          : C:\Chem32\1\DATA\07172018\0712018 2018-07-17 10-40-05\CFAST.M
Last changed    : 6/18/2018 7:39:24 AM
Sample Info     : OIL ORANGE VALENCIA 15-FOLD RECTIFIED
=====

```

```

=====
Module          Type   Firmware rev.  Serial number
-----|-----|-----|-----
68GC           68GC  N.05.05       CN10534013
7673           7673  G1530N.05.05
=====

```

Software Revision: Rev. B.03.02 [341] Copyright © Agilent Technologies

```

Column Description : ZB-5MS
Product#           : 7FD-G011-08      Batch#: zebtron
Serial#            : 441.56863
Diameter           : 180.00 µm      Length : 20.0 m
Film thickness     : 0.18 µm      Void time : 0.901 min
Maximum Pressure   : 0 bar      Maximum pH : 0
Maximum Temperature: 0 °C
Comment           :

```

```

Column Description : ZB WAX PLUS
Product#           : 7FD-G013-08      Batch#: ZEBRON
Serial#            : 441.56865
Diameter           : 180.00 µm      Length : 20.0 m
Film thickness     : 0.18 µm      Void time : 8.316 min
Maximum Pressure   : 0 bar      Maximum pH : 0
Maximum Temperature: 0 °C
Comment           :

```

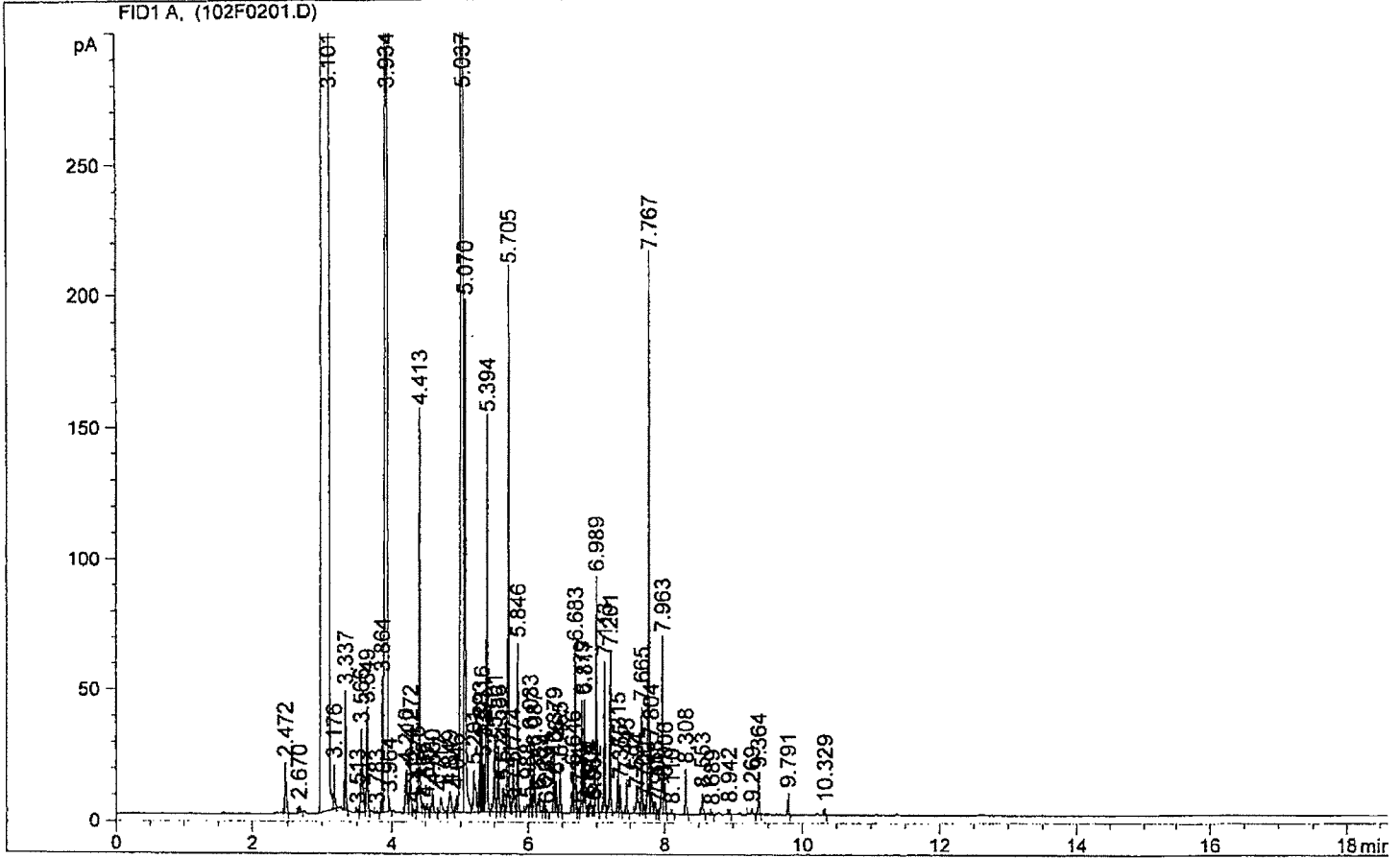
Run Logbook

```

=====
Method          Method started: (F) line# 2 vial# 102 inj# 1  11:04:49 07/17/18
Method          Instrument running sample Vial 102 (front) 11:04:50 07/17/18
Method          Saving Method CFAST.M                    11:29:39 07/17/18
Method          Saving Method RUN.M                      11:29:41 07/17/18
CP Macro        Analyzing rawdata 102F0201.D             11:29:41 07/17/18
=====

```

Sample Name: LOT#MD70685



=====
 Area Percent Report
 =====

Sorted By : Signal
 Multiplier : 1.0000
 Dilution : 1.0000
 Use Multiplier & Dilution Factor with ISTDs

Signal 1: FID1 A,

Peak #	RetTime [min]	Type	Width [min]	Area [pA*s]	Height [pA]	Area %
1	2.472	BB	0.0242	28.97989	19.00134	0.17359
2	2.670	BB	0.0246	4.46249	2.85395	0.02673
3	3.101	BV	0.0525	1.15078e4	2863.04785	68.93274
4	3.176	VB	0.0163	18.54945	16.54849	0.11111
5	3.337	BB	0.0162	47.27402	45.12648	0.28318
6	3.513	BV	0.0179	1.30744	1.10019	0.00783
7	3.566	VV	0.0238	51.15815	31.37034	0.30644
8	3.649	VB	0.0179	43.54129	38.69857	0.26082
9	3.783	BB	0.0182	1.40211	1.21687	0.00840
10	3.864	BV	0.0167	55.64471	51.00934	0.33332
11	3.934	VV	0.0266	1129.74890	584.24103	6.76730
12	3.964	VB	0.0143	4.64828	4.89273	0.02784
13	4.210	BV	0.0278	29.10285	16.49151	0.17433

Sample Name: LOT#MD70685

Peak #	RetTime [min]	Type	Width [min]	Area [pA*s]	Height [pA]	Area %
14	4.272	VV	0.0194	31.98865	25.51059	0.19161
15	4.312	VV	0.0233	2.69902	1.78074	0.01617
16	4.376	VV	0.0161	10.37632	9.97803	0.06216
17	4.413	VV	0.0176	178.96974	153.59663	1.07205
18	4.466	VV	0.0241	6.33039	3.83083	0.03792
19	4.517	VV	0.0217	5.69940	3.74638	0.03414
20	4.600	VB	0.0250	14.92638	8.63067	0.08941
21	4.717	BB	0.0381	15.19820	6.05915	0.09104
22	4.849	BV	0.0383	18.91360	8.14145	0.11329
23	4.946	VV	0.0222	9.58686	6.72226	0.05743
24	5.037	VV	0.0236	1248.21179	686.69183	7.47690
25	5.070	VB	0.0219	271.01306	194.34187	1.62339
26	5.201	BV	0.0328	37.47940	15.60636	0.22451
27	5.293	VV	0.0185	32.95522	26.60686	0.19740
28	5.316	VV	0.0175	37.33314	32.33131	0.22363
29	5.339	VV	0.0166	21.36669	18.59120	0.12799
30	5.394	VB	0.0182	182.66217	150.23303	1.09416
31	5.501	BV	0.0201	38.40541	29.37588	0.23005
32	5.556	VV	0.0205	32.00616	25.02005	0.19172
33	5.624	VV	0.0182	11.34146	9.34546	0.06794
34	5.705	VV	0.0192	254.97498	206.07681	1.52732
35	5.741	VV	0.0162	2.80339	2.51280	0.01679
36	5.774	VV	0.0250	25.43710	15.91481	0.15237
37	5.846	VB	0.0173	68.67425	63.87003	0.41137
38	5.988	BV	0.0332	5.66604	2.89873	0.03394
39	6.033	VV	0.0162	30.31354	28.88674	0.18158
40	6.087	VV	0.0182	27.50539	22.59828	0.16476
41	6.153	VB	0.0267	11.57726	6.15944	0.06935
42	6.234	BV	0.0162	7.17956	6.88053	0.04301
43	6.269	VB	0.0179	1.35390	1.20605	0.00811
44	6.379	BV	0.0190	29.52771	24.25307	0.17687
45	6.408	VB	0.0169	13.49931	12.24954	0.08086
46	6.465	BB	0.0167	20.53240	18.91897	0.12299
47	6.646	BV	0.0185	18.46623	15.68468	0.11061
48	6.683	VV	0.0184	73.30122	63.01922	0.43908
49	6.734	VV	0.0180	2.03678	1.80176	0.01220
50	6.779	VV	0.0176	46.43349	42.22996	0.27814
51	6.817	VV	0.0175	48.98919	42.49139	0.29345
52	6.874	VV	0.0157	3.61157	3.59962	0.02163
53	6.904	VV	0.0242	7.92016	4.57836	0.04744
54	6.952	VV	0.0145	2.46058	2.54146	0.01474
55	6.989	VB	0.0199	122.74691	89.87214	0.73527
56	7.113	BB	0.0174	65.54293	57.02403	0.39261
57	7.201	BB	0.0186	71.48964	60.52728	0.42823
58	7.315	BV	0.0159	22.82752	22.34493	0.13674
59	7.355	VB	0.0181	11.97663	10.51954	0.07174
60	7.445	BB	0.0188	15.42722	12.88212	0.09241
61	7.594	BV	0.0338	18.41996	7.22173	0.11034
62	7.665	VV	0.0187	47.69509	40.05666	0.28570
63	7.700	VV	0.0188	4.89035	3.85400	0.02929
64	7.767	VV	0.0190	273.06683	211.83282	1.63570
65	7.804	VB	0.0199	33.59299	25.95115	0.20123
66	7.858	BV	0.0215	6.68166	4.65987	0.04002
67	7.900	VV	0.0171	1.82312	1.73430	0.01092
68	7.963	VV	0.0165	71.48383	66.61192	0.42819
69	8.006	VB	0.0239	19.88905	11.64834	0.11914

Peak #	RetTime [min]	Type	Width [min]	Area [pA*s]	Height [pA]	Area %
70	8.110	BB	0.0169	1.95097	1.76986	0.01169
71	8.308	BB	0.0187	21.51037	17.03302	0.12885
72	8.553	BB	0.0224	12.11776	7.67167	0.07259
73	8.689	BB	0.0165	1.57092	1.46053	0.00941
74	8.942	BB	0.0189	2.73899	2.26940	0.01641
75	9.269	BB	0.0277	4.90413	2.49926	0.02938
76	9.364	BB	0.0171	17.01572	15.18539	0.10193
77	9.791	BB	0.0168	8.68630	7.91524	0.05203
78	10.329	BB	0.0170	2.84563	2.55428	0.01705

Totals : 1.66942e4 6365.21102

=====
*** End of Report ***